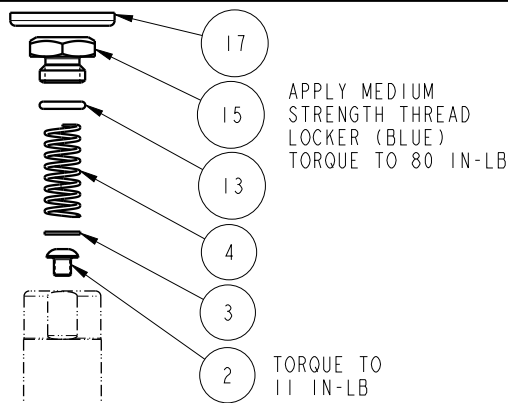
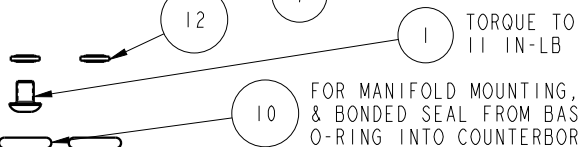
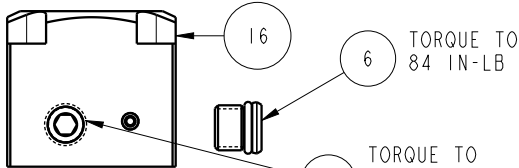
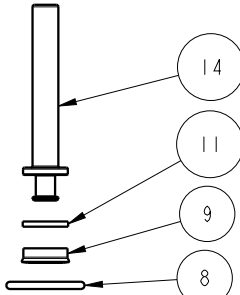
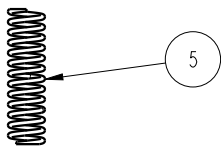
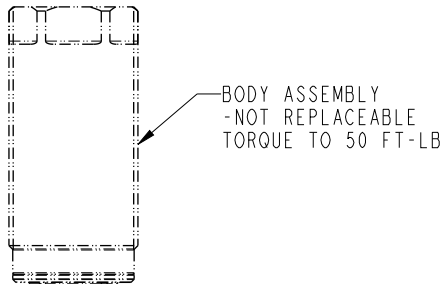
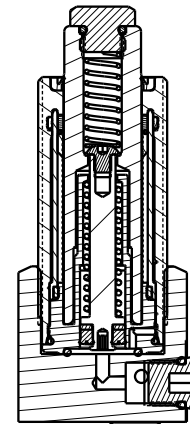


SEE IS1023 FOR SERVICE INSTRUCTIONS.
LUBRICATE ALL SEALS WITH CLEAN HYDRAULIC OIL
PRIOR TO ASSEMBLY.
DO NOT USE SILICONE BASED LUBRICANTS.



PLUNGER
These work supports are fully rebuildable to full factory original capacity by any authorized Vekttek repair facility. All seals can be replaced by any authorized repair facility.



NO	QTY	PART NO	DESCRIPTION	STD SEAL KIT	SPRING KIT
1	2	21410006	BHCS, 8-32 x 1/4, SST		
2	1	21410075	BHCS, 8-32 x 3/16 SELFLOCK, SST		
3	1	21430001	WASHER		
4	1	23350083	SPRING, COMPRESSION		X
5	1	23355023	SPRING, COMPRESSION		X
6	1	30601144	PLUG, SOCH, SAE 4		
7	1	30603322	PLUG, PIPE, HEX, HOL, 1/8 NPT, STEEL		
8	1	39000061	O-RING, (-016)	X	
9	1	39050028	SEAL, BEVEL, 3/16 X 7/16 X 1/8	X	
10	2	39051012	O-RING, (-109)	X	
11	1	39054039	BU RING, (-201)	X	
12	2	39055022	SEAL, BONDED, M4		
13	1	55250005	O-RING, (-011)	X	
14	1	81010815	PISTON, WS, FA, 3000 & 13.4KN, LS		
15	1	81040817	BOLT, CONTACT, WS, FA, 2500 & 3000		
16	1	91040827	KIT, BASE, WS, FA, MM, HC, 4000, PPS		
17	1	39V10023	WIPER,PRESS-IN, (3/4), VBGV	X	
N/A	N/A	60100123	KIT, SEAL, WS, FA, BM, HC, 4000	NOTED	N/A
N/A	N/A	61100225	KIT, SPRING, WS, FA, HC, 4000, LS	N/A	NOTED
N/A	N/A	IS1023	INSTRUCTION SHEET	N/A	N/A

PARTS LIST



VEKTEK, INC.
1334 E. SIXTH AVE. P.O. BOX 625
EMPORIA, KS. 66801 U.S.A.

ASSEMBLIES AFFECTED
10080826

PARTS LIST, ASSY, WS, FA, BM, HC, 4000, LS

SIZE
A PL1114

REV
B

SHEET 1 OF 1

FORM FEG035_PL_ASIZE, REV. B

B	4993	RELEASE	RLK	12/7/22
REV	IN ACCORDANCE WITH ECN	EFFECTIVE DATE	REVISED BY	DATE
DRW BY:	ALS	DRAWING STATUS: Released		
DATE:	3/3/20	PRODUCTION APPROVED FOR RELEASED STATUS ONLY		